

Fulflo® S Filter Vessels

- Carbon Steel
- 304 and 316 Stainless Steel

Multi-Cartridge Filter Vessel Series

Fulflo® S Series Coded Filter Vessels

Fulflo® S Series Multi-Cartridge Filter Vessels meet a broad range of liquid and gas applications for flow rates up to 2,040 gpm (7,720 lpm). PED compliance consult Parker.

The S Vessel Series accommodates double-open-end (DOE) or single-open-end (SOE) filter cartridges in 254mm, 508mm, 762mm and 1016mm equivalents.

Applications

- Liquid
- Gas
- Food & Beverage
- Chemical Processes
- Petrochemical
- Paints & Coatings
- Industrial



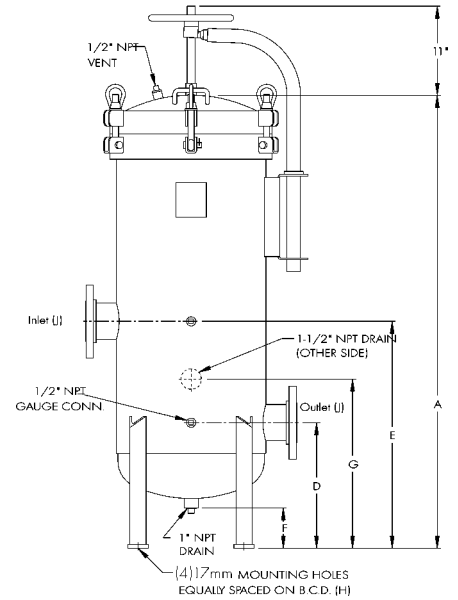
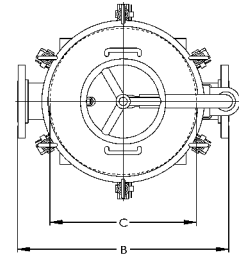
Design Features

- Built in accordance with pressure vessel code.
- Available in 150 psi (10.3 bar) and 300 psi (20.7 bar)
- Mechanical coverlifts standard on most models.
- S85 and S102 feature hydraulic coverlifts (available on all models as an option).
- Buna-N O-ring closure seal provides positive cover sealing.
- Viton* elastomer, neoprene, ethylene propylene rubber and Teflon* elastomer O-rings are also available for temperatures up to 500°F (261°C).
- All S models feature swing bolts with closures for quick cleaning and servicing.
- Accepts double-open-ended (DOE) or single-open-ended (SOE) cartridges.

Process Filtration Division

WARNING! FAILURE OR IMPROPER SELECTION OR IMPROPER USE OF THE PRODUCTS AND/OR SYSTEMS DESCRIBED HEREIN OR RELATED ITEMS CAN CAUSE DEATH, PERSONAL INJURY AND PROPERTY DAMAGE.
This document and other information from Parker Hannifin Corporation, its subsidiaries and authorised distributors provide product and/or system options for further investigation by users having technical expertise. It is important that you analyse all aspects of your application and review the information concerning the product or system in the current product catalogue. Due to the variety of operating conditions and applications for these products or systems, the user, through its own analysis and testing, is solely responsible for making the final selection for the products and systems and assuring that all performance, safety and warning requirements of the application are met. The products described herein, including without limitation, product features, specifications, designs, availability and pricing, are subject to change by Parker Hannifin Corporation and its subsidiaries at any time without notice.

Multi-Cartridge Filter Vessel Series



Maximum Operating Conditions

| Material of Construction | Maximum Operating Pressure (bar @ 121°C) [†] | Maximum Design Temperature |
|--------------------------|---|----------------------------|
| Carbon Steel | 150 psi (10.3 bar) | 500°F (261°C) |
| Carbon Steel | 300 psi (20.7 bar) | 500°F (261°C) |
| 304 Stainless Steel | 150 psi (10.3 bar) | 300°F (150°C) |
| 304 Stainless Steel | 300 psi (20.7 bar) | 300°F (150°C) |
| 316 Stainless Steel | 150 psi (10.3 bar) | 400°F (206°C) |
| 316 Stainless Steel | 300 psi (20.7 bar) | 400°F (206°C) |

[†] Operating temperature limited by standard gasket material and exterior paint.

150 psi (10.3 bar) Design Specifications

| Model | No. & Length of Cartridges (in) | Maximum Flow (l/min) | Dimensions (in) | | | D mm | E mm | F mm | G mm | H mm | J ^{††} | Shipping Weight Kg |
|-----------|---------------------------------|----------------------|-------------------|------|------|------|------|------|------|------|-----------------|--------------------|
| | | | A [†] mm | B mm | C mm | | | | | | | |
| S25-3-4F | (25) 30 7620 | 1419 | 1420 | 660 | 460 | 390 | 710 | 130 | 520 | 450 | 4 | 234 |
| S25-4-6F | (25) 40 10160 | 1893 | 1720 | 660 | 460 | 420 | 790 | 130 | 570 | 450 | 6 | 245 |
| S35-3-4F | (35) 30 7620 | 1987 | 1470 | 750 | 510 | 420 | 790 | 130 | 570 | 500 | 4 | 291 |
| S35-3-6F | (35) 30 7620 | 1987 | 1480 | 750 | 510 | 420 | 790 | 130 | 570 | 500 | 6 | 293 |
| S35-4-6F | (35) 40 10160 | 2650 | 1730 | 750 | 510 | 420 | 790 | 130 | 570 | 550 | 6 | 316 |
| S40-3-6-F | (40) 30 7620 | 2291 | 1530 | 780 | 560 | 460 | 81 | 130 | 600 | 550 | 6 | 368 |
| S52-3-4F | (52) 30 7620 | 2952 | 1620 | 850 | 610 | 520 | 86 | 130 | 700 | 600 | 4 | 389 |
| S52-3-6F | (52) 30 7620 | 2952 | 1620 | 850 | 610 | 520 | 86 | 130 | 700 | 600 | 6 | 393 |
| S52-4-6F | (52) 40 10160 | 3936 | 1850 | 850 | 610 | 520 | 86 | 130 | 700 | 600 | 6 | 409 |
| S85-3-8F | (85) 30 7620 | 4806 | 1680 | 1010 | 760 | 560 | 102 | 150 | 930 | 820 | 8 | 532 |
| S85-4-8F | (85) 40 10160 | 6435 | 1920 | 1010 | 760 | 560 | 102 | 150 | 730 | 820 | 8 | 545 |
| S102-3-8F | (102) 30 7620 | 5391 | 1760 | 1080 | 810 | 600 | 105 | 150 | 730 | 820 | 8 | 659 |
| S102-4-8F | (102) 40 10160 | 7721 | 2010 | 1080 | 810 | 600 | 105 | 150 | 730 | 820 | 8 | 727 |

[†] Add 5 in to this dimension for hydraulic coverlift.

^{††} Inlet and outlet size standard A.S.A. flanges.

Ordering Information

| | | | | | | | |
|--------------------------|--------------------------|-------------------|-----------------------|--------------------------|------------------|----|----|
| 4 | S | 35 | — | 3 | — | 4F | K1 |
| | | | | | | | |
| Material | Design Series | Number of Columns | Cartridge Length (mm) | Inlet/Outlet Flange Size | Coverlift Option | | |
| No Symbol = Carbon Steel | S = Dished Head (25-102) | 25 | 3 = 762 | 4F = 4 in Flange | K1 = Mechanical | | |
| 4 = 304 Stainless Steel | HS = High Pressure | 35 | 4 = 1016 | 6F = 6 in Flange | K2 = Hydraulic | | |
| 6 = 316 Stainless Steel | CS = Non-code | 40 | | 8F = 8 in Flange | | | |
| | | 52 | | | | | |
| | | 85 | | | | | |
| | | 102 | | | | | |

* A trademark of E. I. du Pont de Nemours & Co.

Process Filtration Division

Parker Filtration
 Filter Division Europe
 Shaw Cross Business Park
 Dewsbury, West Yorkshire
 WF12 7RD, England
 Phone: +44 (0) 1924 487000
 Fax: +44 (0) 1924 487001
 Website: www.parker.com

